

Office to let

Jupiter House

Bucharest, Sector 1, 65 Sf. Voievozi St.



Building information

Building status	Existing
Year of reconstruction	2019
Parking ratio	1 / 150 sq m
Total building area	2 800 sq m

Commercial terms

Office space*	after login *
Parking	after login *
Service charge*	after login *
Minimum lease term	after login *
Availability	after login *

* Asking terms for m²/month

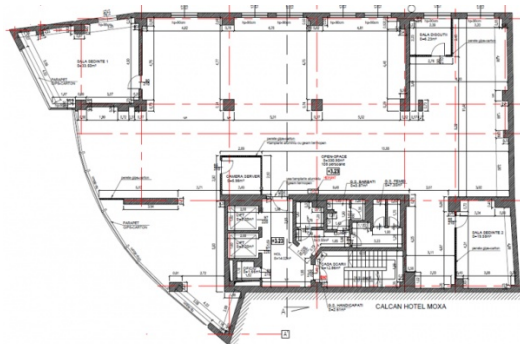
Location



Available space

Building completely leased

Typical floor plan



Public transport

Metro: M1, M2

Bus: 133, 168, 226, N117, 65, 79, 86

Contact



+40 21 302 3400

More information